

GST-Sumc

Cat. # E3110

Also Known as:

NCBI Reference:

MW (no tag):

Species:

Source:

Tag:

Stock Buffer:

Concentration:

Quality Assurance:

Image

Description:

Storage:

Note:

Literature:



1

DAP1; GMP1; PIC1; SMT3; UBL1; OFC10; SENP2; SMT3C; SMT3H3

NM_003352

11.6 kDa

Human

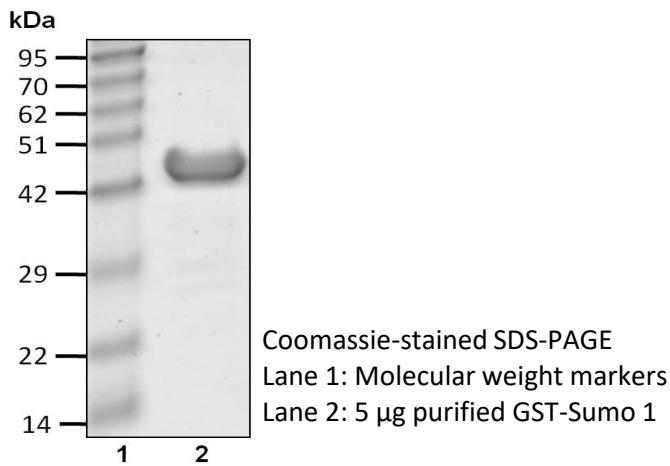
Bacterial recombinant

GST

20 mM Tris, pH7.6 at 4 °C, 150 mM NaCl, 2 mM β ME, 10% Glycerol

See tube label

~95% by SDS-PAGE



SUMO (small Ub-related modifier) is a Ub-like protein. Three types of SUMO are most commonly studied, SUMO 1, SUMO 2, and SUMO 3. SUMO 2 and SUMO 3 are almost identical isoforms and thus share many functions. Like Ub, SUMO can be conjugated to its target proteins as a polymeric chain. However, SUMO 1 forms chains inefficiently as compared to SUMO 2 and SUMO 3. SUMO is conjugated to target proteins by the E1 (SAE1/SAE2), E2 (Ube2I or Ubc9), E3 (RanBP2/Nup358, amongst others). Protein sumoylation is involved in many cellular processes including gene transcription.

Store at -80°C; avoid multiple freeze-thaw cycles

N/A

1. Boddy MN, *et al.* (1996) *Oncogene* 13, 971 – 982.
2. Bayer P, *et al.* (1998) *J Mol Biol* 280, 275 – 286.
3. Melchior F, (2000) *Annu Rev Cell Dev Biol* 16, 591 – 626.
4. Praefcke GJK, *et al.* (2012) *Trends Biochem Sci* 37(1), 23 – 31.
5. Werner A, *et al.* (2012) *Mol Cell* 46(3), 287 – 298.

